

# **Notebook PC Service Manual**

**Model: PH6PG72**

## **Chapter 5 Installation Guidelines**

**5.1. RAM, SSD, WLAN, Module Installation.....**

**3-5**

## 5.1. RAM, SSD, WLAN Module Installation

### Warning Notice

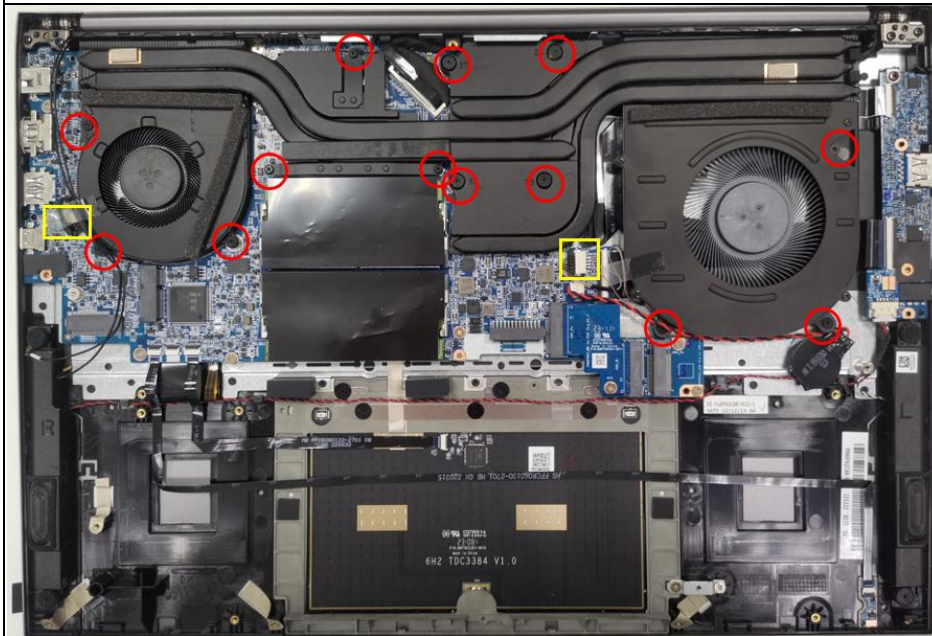
For precaution measures, please disconnect the AC adapter and remove the battery from the battery compartment while doing the installation procedure of the Memory.

Procedure to remove the battery



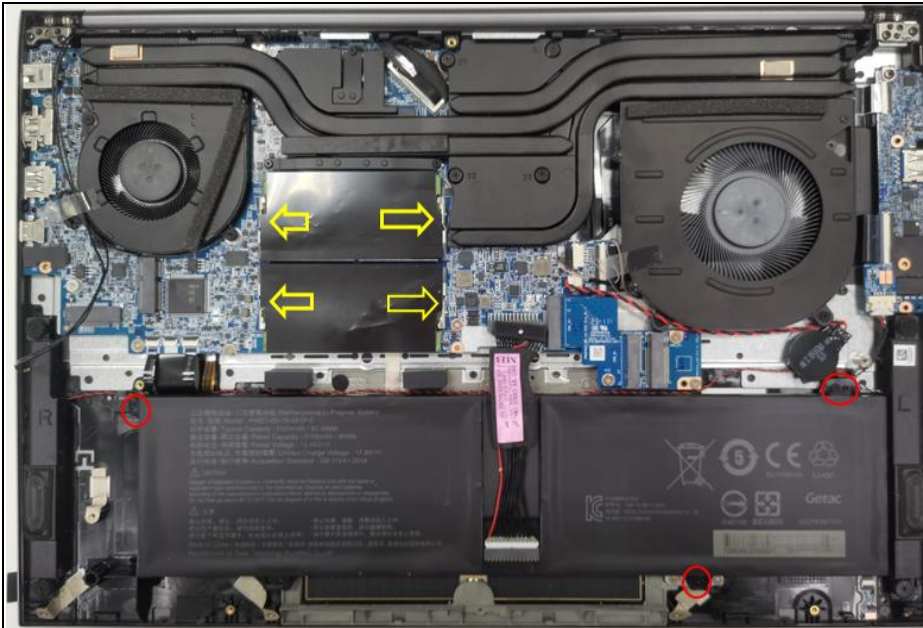
1. Unfasten nine screws and take out the bottom cabinet.

electric screw driver torq values:  
2.0±0.2 kgf.cm  
1# screwdriver bit



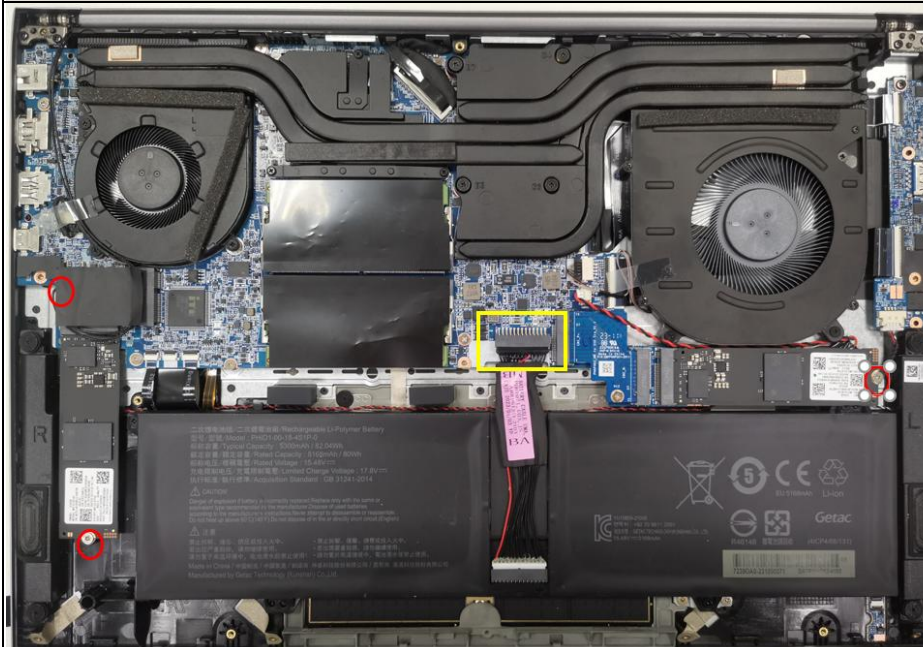
2. Fasten thirteen screws of the thermal module and insert the fan cable.

electric screw driver torq values:  
1.5±0.2 kgf.cm  
1# screwdriver bit



3. Install the battery than fasten three screws. Then install the RAM into the RAM socket.

electric screw driver torq values:  
 $1.5 \pm 0.2$  kgf.cm  
 1# screwdriver bit



4. Install the WLAN card and SSD, than fasten three screw, then insert the battery cable and antenna cable.

SSD electric screw driver torq values:  
 $1.0 \pm 0.2$  kgf.cm  
 1# screwdriver bit

WLAN electric screw driver torq values:  
 $1.5 \pm 0.2$  kgf.cm  
 1# screwdriver bit



5. Install the bottom cabinet then fasten nine screws.

electric screw driver torq  
values:  
2.0±0.2 kgf.cm  
1# screwdriver bit